



ALBRECHT  
ENGINEERING INC

www.albrechtengineering.com

3500 Boston Street, Suite 329, MS-12  
Baltimore, MD 21224

410.522.5870 phone  
443.927.7446 fax

## Geographic Information Systems

Engineering design with innovative solutions.

### ABOUT US

Albrecht Engineering, Inc. is a woman-owned consulting firm founded in 2008 by Rachel Albrecht. We provide **Engineering Design and Analysis**, **Construction Management**, and **Geographic Information Systems (GIS)** services. We have a proven track record of competing projects and producing high quality deliverables on time and on budget.

Albrecht Engineering, Inc. has utilized GIS for several years on many of our engineering and design projects. We are pleased to be able to offer GIS consulting and management as a standalone service.

### TYPES OF SERVICES

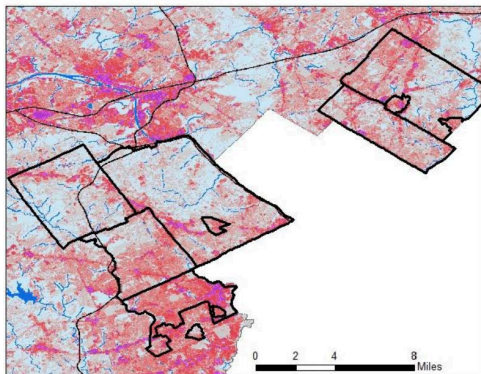
- ◆ GIS Consulting
- ◆ Project and Program Management
- ◆ Data Services and Data Management
- ◆ Spatial Analysis and Modeling
- ◆ Mapping — print, web, mobile
- ◆ Business Analysis and Needs Assessment
- ◆ Conceptual Design for Application Development and Enhancement
- ◆ Application Testing
- ◆ Technical Writing
- ◆ Training

### MARKETS

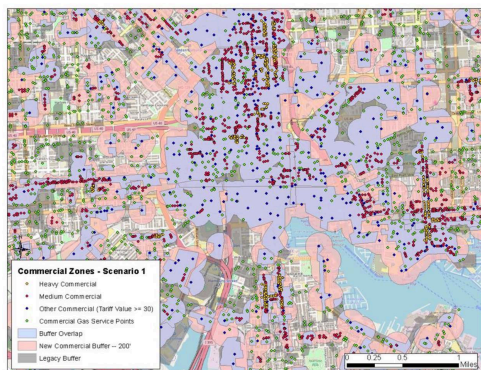
- ◆ Transportation
- ◆ Environmental
- ◆ Utilities
- ◆ Asset Management
- ◆ Urban Planning

### CLIENTS

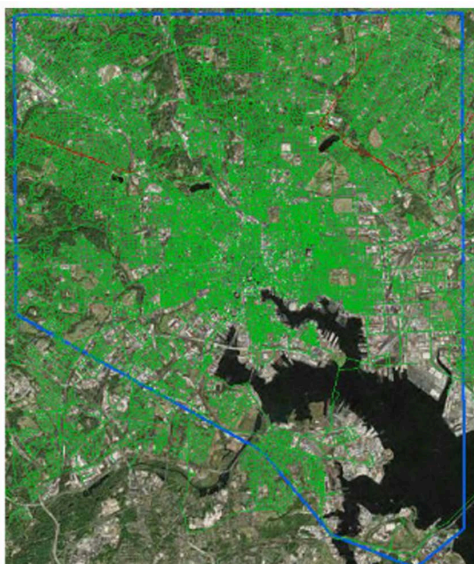
- ◆ City of Baltimore, MD
- ◆ Baltimore Gas & Electric
- ◆ Maryland State Highway Administration
- ◆ Prince George's County, MD



Impervious Surface Calculations



Commercial Point Survey Analysis



Utility Infrastructure QA/QC